



ONE MISSION

Richmond County Savings Foundation

ANNIVERSARY REPORT 1998-2008

president's message }



*In 2007 the Richmond County Savings Foundation celebrated its **tenth year of partnership** with the Staten Island community. This anniversary provides us the opportunity to both look back on the progress we have made, as well as look forward to the future we seek to make.*

In its infancy, the Foundation was envisioned as a continuation of the Richmond County Savings Bank's charitable programs which dated back in this community to 1886. While the Foundation continued in its early years in this role, it soon established itself as a major contributor to a broader community.

As we celebrate the conclusion of our first decade, it is natural for us to pause and take a look back. A decade ago the Richmond County Savings Foundation made its first grant in the amount of \$2,000 to support the 150th Anniversary of a local parish. Our total giving for our first year was \$1.65 million. Our endowment was \$19 million.

Today, our giving has grown to well over \$3 million a year for a total of \$32 million invested in our communities since 1998.

Our equity today is nearly \$80 million. However, as impressive as we believe these numbers are, they do not begin to tell the story of the Foundation's true accomplishments.

Those accomplishments are witnessed in the capital projects we have supported, the programs we have funded, the people we have partnered with who offer hope.

In the pages to follow, we take a look at some of the initiatives funded during each of our first ten years. RCSF has had the opportunity to provide substantial support to a variety of initiatives whose goals and our mission ~ improving the quality of life in our communities ~ went hand in hand.

This milestone anniversary affords us a chance to reflect. We are not the same Foundation we were

upon incorporation on April 30, 1998, nor should we be. Staten Island is not the same borough it was in 1998. Our success is dependent upon our ability to adapt to the changing needs of our communities. However, as some things change, others will remain the same. The Foundation remains committed to our mission and to using our resources wisely. Our giving philosophy is simple: Social responsibility coupled with fiscal accountability.

We are proud of the progress we have made in our first ten years and look forward to the opportunities and challenges of the future.

What's next....stay tuned...



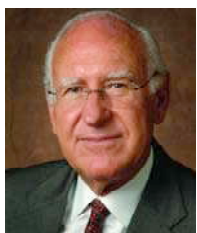
Michael F. Manzulli
President & CEO

the team }

The Foundation over its ten year history has benefited from a continuity of leadership. Michael F. Manzulli has served as President of the Foundation from inception and the Foundation has greatly benefited from his guidance and vision. In addition, the Foundation continues to be the recipient of contributions from five of its original eight Founding Directors.

founding directors }

Michael F. Manzulli



Chairman,
Richmond
County Savings
Bank; Retired,
Chairman
New York
Community
Bank

Godfrey H. Carstens, Jr.



President,
Carstens
Electrical
Supply;
Director,
Richmond
County Savings
Bank

Robert S. Farrell



President, H.S.
Farrell Lumber
Company;
Director,
New York
Community
Bank

Dr. William C. Frederick



Retired
Surgeon;
Director,
New York
Community
Bank

James L. Kelley



Partner, Lahr,
Dillon, Manzulli,
Kelley & Penett,
P.C.; Director,
Richmond
County Savings
Bank



all other current directors }

Thomas R. Cangemi



Senior Executive Vice President & Chief Financial Officer, New York Community Bancorp, Inc.

Edward Cruz



Chief Executive Officer, EE Cruz & Co., Inc.

Alfred B. Curtis, Jr.



Director of Business Development, Vision Financial Corporation

Joseph R. Ficalora



Chairman, President and Chief Executive Officer, New York Community Bancorp, Inc.

Caroline Harrison



Publisher, Staten Island Advance

Patrick EX. Nilan



Retired Chairman, First Savings Bank of Bayonne

all past directors }

Anthony E. Burke,
Retired

T. Ronald Quinlan,
Emeritus

Richard Addeo,
Deceased

Richard Diamond,
Deceased

Maurice K. Shaw,
Deceased

staff }

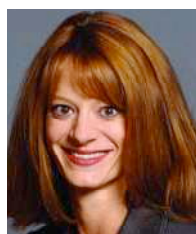
The Foundation has been aptly served by a dedicated staff, including Cesar J. Claro, Kim Seggio and Laureen Henry who have been with the Foundation since its first year.

Cesar J. Claro



Founding Executive Director of the Foundation

Kim Seggio



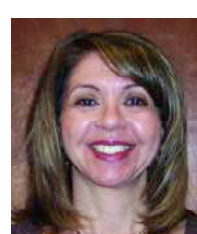
Senior Program Officer and Board Secretary

Laureen Henry



Senior Program Officer

MaryAnn DeSapio



Program Associate

by the numbers } —

A quantitative look at the Richmond County Savings Foundation's **Ten Year history** offers but a glimpse of the Foundation's accomplishments. As previously stated, the true impact of those contributions is witnessed and experienced everyday in a qualitative look at our community's well being.

{ To add perspective to the numbers }

- ✓ 10 Years and Counting
- ✓ \$32 million in Giving and Climbing
- ✓ \$80 million in Assets and Growing





✓ 3,112 Grants Approved

Approximately 26 grants a month over the Foundation's 10 Year History to our partner community organizations.....



✓ \$31,949,456 in Funding

Over \$266,245 a month in support of community programs and initiatives.....

- ✓ \$5.9 million to assist Cultural facilities and initiatives
- ✓ \$5.7 million in support of Social Services programs
- ✓ \$5.3 million to further Educational offerings
- ✓ \$3.7 million to facilitate Healthcare
- ✓ \$2.7 million to provide Youth Services opportunities
- ✓ \$1.1 million to sustain Community Development
- ✓ \$887,000 thousand to assist Economic Development

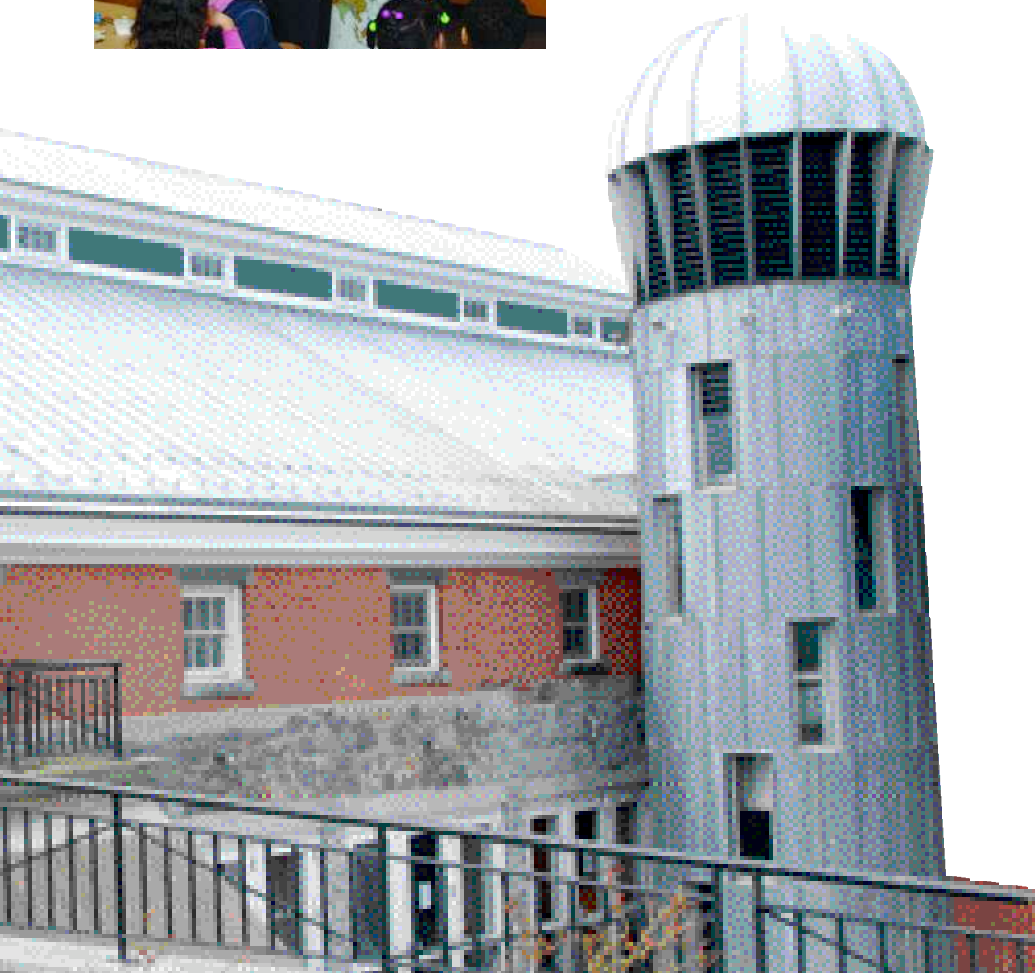
...

1998}

The Foundation began its giving programs in 1998 and approved \$1.65 million in grants in six months. The first year found the Foundation extremely busy in establishing its funding programs, staffing its operations and communicating its existence to the communities it would serve. The greatest amount of giving in the first year was committed to support major capital initiatives at many of the Island's cultural facilities including The Music Hall at Snug Harbor, the Chinese Scholar's Garden at the Staten Island Botanical Garden, the only authentic garden of this type in the nation, and the Staten Island Children's Museum. These projects, whether renovating or expanding existing facilities or building brand new, helped enhance the cultural landscape available to thousands of Staten Islanders.



{1998



The Staten Island Children's Museum capital project, "The Children's Museum Raises a Barn" renovated a 6,000 square foot 1891 barn to offer many new interactive and innovative exhibits aimed at stimulating children's natural curiosity, creativity and imagination. The Barn offers exhibits, classrooms and a Café. The Foundation's grant of \$150,000 was acknowledged onsite with the naming of the Richmond County Savings Foundation Education Center. The Center serves more than 8,500 children each year through an intensive arts program including mask, book, print and puppetry making programs and Kids Cook classes. The Center also serves as host to mini camps, school outreach programs and on-site birthday parties serving approximately 13,000 persons each year and generating income to support the Museum's programming.

1999}

In the Foundation's first full year of operations, \$2.3 million was granted as Staten Island's not for profit community organizations responded to the existence of a dedicated wealth of philanthropic resources to which they were the priority. This year also brought some internal changes for the Foundation as the Richmond County Savings Bank successfully acquired banks in the Ironbound section of Newark and Bayonne.

As a result, the Foundation's definition of community grew, as did its service area.



1999



The Foundation this year supported the construction of the **Heart Institute**, a joint venture of Sisters of Charity Health Care and Staten Island University Hospital. The Heart Institute would offer the Staten Island community for the first time a facility capable of providing open heart surgery on Staten Island. Heart disease ranks among the leading causes of death on Staten Island, yet until the opening of the Heart Institute, Islanders were forced to go off Island for advanced surgical options. The Foundation's support of \$100,000 was used toward the purchase of electrocardiograph equipment (EKG). Since opening in 2001, 3,817 surgeries have been performed and 7,843 angioplasties for a total of nearly 12,000 persons served by this facility.

2000}

In its third year, the Foundation granted \$2.2 million as it continued its investment in socially and fiscally responsible organizations. After another banner year of financial success achieved by the Richmond County Savings Bank, the Foundation watched its endowment grow to \$44 million. The formula remained simple ~ the success of the Bank translated directly into more resources available for the Foundation's communities.



{2000



Funding this year to **Sisters of Charity Housing Development Corporation** for the Sister Elizabeth Boyle Manor Assisted Senior Living initiative provided 65 housing units for low-income seniors. The Foundation's support of \$50,000 enabled the organization to supplement the offerings of the new facility not covered by federal monies which financed the capital construction costs. The Foundation's grant equipped the residence with amenities and recreational materials for the seniors.



2000



2001}

The year 2001 was a historic year for both the Foundation and the nation. The Foundation found itself the benefactor of the merger of Richmond County Savings Bank and New York Community Bank. This new partnership was a catalyst that helped the Foundation's original endowment more than triple in value, and allowed the Foundation to commit \$2.99 million ~ more funding than in any previous year.

September 11, 2001 was a defining moment for both the history of our country as well as the concept of corporate philanthropy. The events of the day would reverberate for years to come as philanthropic programs struggled to balance the support of disaster relief efforts with the continuance of support to local community programs.



{2001



The Foundation in 2001 approved a \$1 million fund to support the families of the World Trade Center victims.

In addition, in the continuance of its support to organizations that share the Foundation's belief of social responsibility coupled with fiscal accountability, the Foundation approved a \$100,000 grant to Catholic Charities for a new multi-faceted youth center ~ the **CYO Mission of the Immaculate Virgin Youth Center at Mount Loretto**. The Foundation's support was used to equip a ten thousand square foot gymnasium and provide a sound system in the new facility. The Center serves 1,000 children a week from youth leagues and local public schools.



2001



2002

In its fifth anniversary year, the Foundation continued to assess its performance both in terms of the social impact of its grant making activities as well as its endowment investment performance.

The Foundation's endowment increased in value by approximately 300% by 2002. In five funding years, the Foundation invested nearly \$13 million in its communities' potential, with \$3.77 million disbursed in 2002.

2002



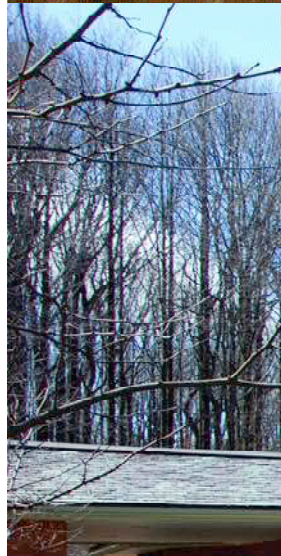
{2002



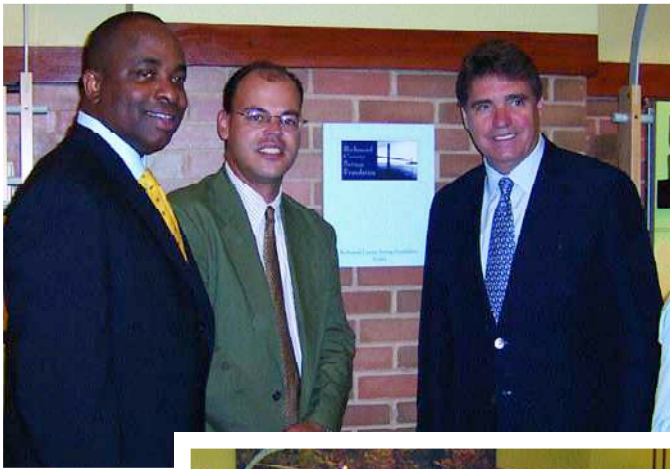
The Foundation partnered this year with **Eger Lutheran Homes** in support of the construction of a new 5-story assisted living facility. The 75 studio residence offers the frail elderly whose health care needs exceed the capacity of home care services an option to a nursing facility. The Foundation's \$50,000 grant was targeted to the lobby area of the Harbor House which was furnished with an eye toward creating a home-like atmosphere and welcoming gathering place for the residents.

2003}

By its sixth year, the Foundation had enjoyed a significant growth in its original endowment. The Foundation continued to take very seriously the wonderful responsibility entrusted to it as steward of the Foundation's resources. However, as those resources grew, so did the choices the Foundation faced. The challenge, therefore, became making the right choices ~ the right choices for the Foundation's future, as well as the right choices for its community and its future generations. This year the Foundation's choices resulted in \$3.3 million in funding to community projects and programs.



{2003



In 2003, the Foundation approved a half million dollar commitment for a new Nature Center which would act as a gateway to the Greenbelt and to Staten Island's natural history.

The Greenbelt Nature Center would be a public facility and free of charge to the community.

Since opening, over 100,000 persons have visited the Center which provides innovative technology that guides visitors through hands-on, interactive exhibits in an appreciation of Staten Island's unique natural resources. The Foundation's significant contribution was acknowledged with a naming of The Richmond County Savings Foundation Exhibits at the Greenbelt Nature Center.

2003

2004

During its 7th year the Foundation continued to support efforts to both preserve and honor its communities' past generations and history, as well as bolster future generations. Toward that goal, the Foundation had the pleasure this year of committing \$5.2 million in funding and joining in innovative and creative partnerships that offered further dimension to programs and services available to the community.

One such partnership was the **Friends of Abandoned Cemeteries** program which brought together five community nonprofit organizations all joining hands in a common effort to restore a bit of Staten Island's historic past.



2004



Friends of Abandoned Cemeteries, On Your Mark, Community Resources, Lifestyles for the Disabled and the Lynn Robbins Steinmen Foundation worked together this year to restore and beautify abandoned cemeteries throughout Staten Island. The program strived to ensure that future generations would have access to Staten Island's past. The Foundation provided a grant of \$99,500 which was used to purchase cleanup supplies, gardening tools, protective gear, a storage shed, a Bobcat, landscaping materials, as well as new signage for the cemeteries.



2005}

At the conclusion of the Foundation's eighth funding year, over \$26 million had been contributed through the network of partnerships the Foundation had forged with community based providers since 1998. The Foundation continued in its mission to support programs and initiatives aimed at improving the quality of life in its communities and committed \$3.5 million in 2005. However, the Foundation maintained flexibility in its giving program which allowed it to both to respond to its communities' needs as they arose, as well as create new options for the community.

One such option in 2005 was the Foundation's sponsorship of Staten Island's first borough wide public art project.



{2005

2005

In answer to previous New York City based projects such as "Cows on Parade" and "The Big Apple Fest" which mostly excluded Staten Island, the **"Dolphin Sightings"** project brought 30 life-sized fiberglass mammals to the borough. Communities from St. George to Tottenville enjoyed the display of the lovable mammals over a four month period. As sponsor of the project, the Foundation brought together various local organizations and businesses whose participation helped in making "Dolphin Sightings" a true community wide program. The final "Dolphin Sighting" was in October when the project culminated with a celebrity auction of the dolphins to benefit local, non-profit organizations.

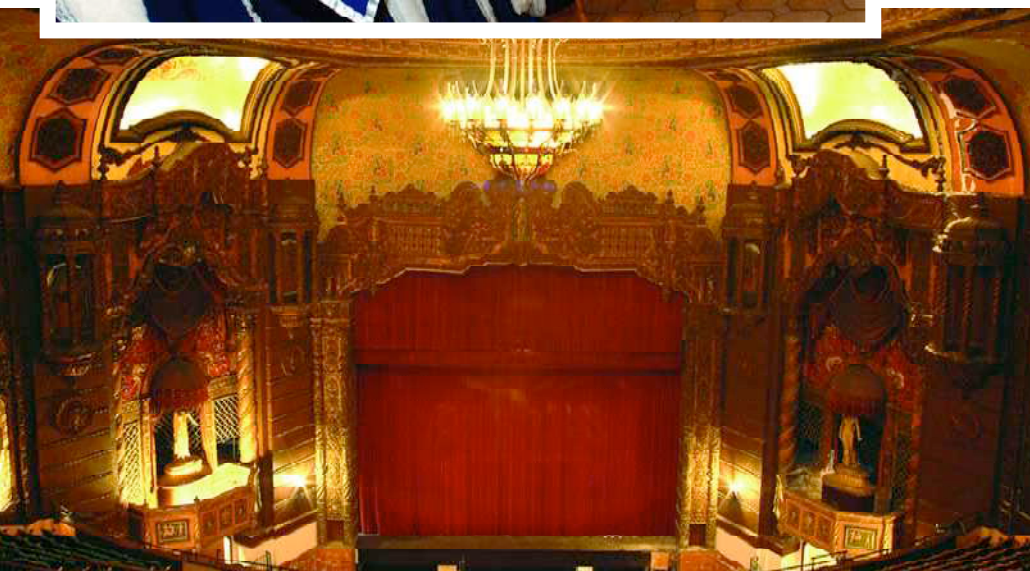
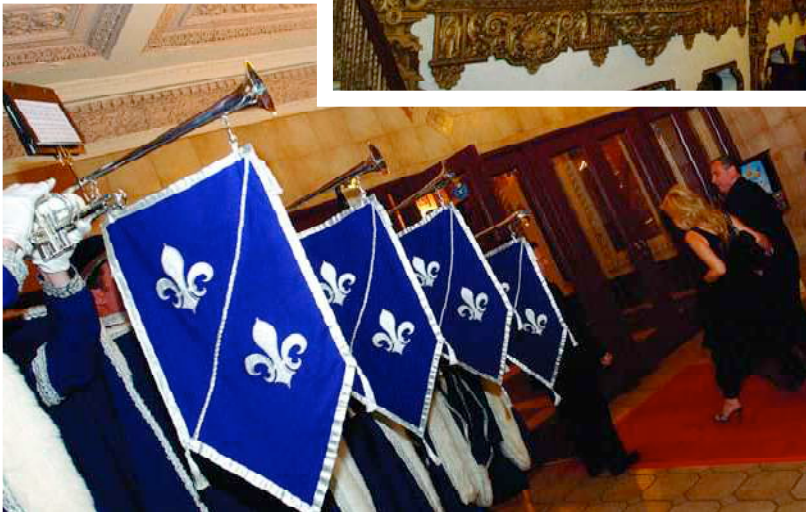


2006}

In its 9th year, the Foundation continued to focus on its partners, whether it was the development of new partnerships or the continuation of support to existing partnerships. The Foundation this year provided \$3.2 million in funding for improved higher educational facilities, transportation services for the developmentally disabled and foreclosure prevention programs. In addition, the Foundation supported initiatives aimed at insuring that the development of Staten Island's future was balanced with the preservation of its past. One such initiative was the Foundation \$100,000 grant toward the restoration of the historic **St. George Theater**.



{2006



Richmond Dance Ensemble assumed ownership of the theater in 2004 and worked tirelessly to restore the theater to provide the Staten Island community a major cultural and performance arts center. The Foundation's funding was used toward the installation of a new air conditioning system necessary to bring the 80-year-old theater up to modern-day standards and allow for year-round operation.

The newly renovated St. George Theatre provides a wide range of programming to the community including outreach educational programs, architectural tours, concerts, comedy, Broadway touring companies and various children's shows.

2006

2007}

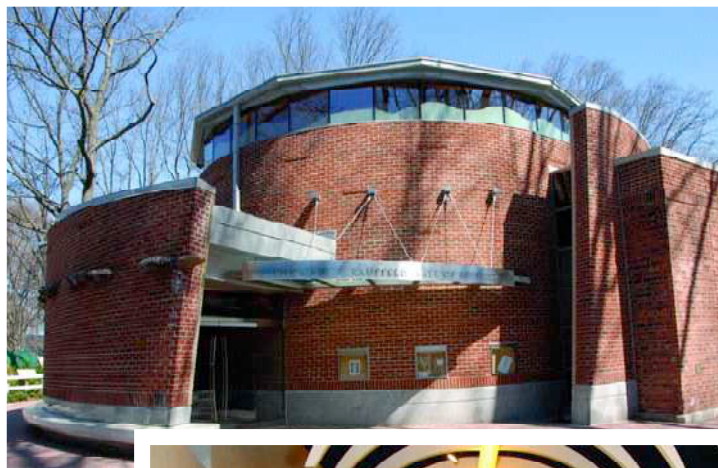
Any success the Foundation has achieved over its first ten years would not have been possible without its partner community organizations. The Foundation has never lost sight of one simple fact ~ its role is that of a catalyst.

The Foundation's success is dependent on its ability to forge effective partnerships. The Foundation's role is not to build the facilities, offer the programs or provide the services, but to find, fund and partner with organizations capable of effectively accomplishing these goals.

Toward that goal in its 10th funding year, the Foundation committed nearly \$3.3 million.



{2007



2007

In April this year, the **Staten Island Zoo** opened its newly renovated and expanded Reptile Wing. The 13,500 square foot wing offers exhibit space, a 250 person capacity auditorium, classrooms and a kitchen facility. The Foundation's \$100,000 support was used to purchase new animals, equipment and exhibitry.

The Staten Island Zoo's original reptile collection had achieved international status as the first zoo to exhibit all 32 varieties of rattlesnakes known to occur in the United States. By the late 1960's, the Zoo offered one of the most complete rattlesnake collections in the world. The renovation and expansion of the Reptile Wing would help ensure that the Staten Island Zoo continued to provide a world class facility for the community's education and enjoyment.

legacy }

In its ten funding years, **RCSF** has supported places within our community where students learn, patients heal, nature is explored, research is conducted and support services are offered. All in the hope, that what is restored, preserved, expanded, constructed and renovated will be the legacy that is left for our future generations.

RCSF's significant support to some of these initiatives has helped create legacies ~ the legacy of the project or program itself as well as the legacy of RCSF's partnership.

These projects include:

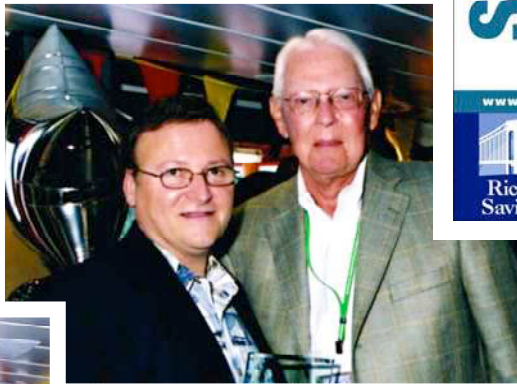
The Richmond County Savings Foundation Tuscan Garden at the Staten Island Botanical Garden

brings classical renaissance beauty to Staten Island. Visitors to the one acre site will be transported to Florence Italy and the Villa La Gamberaia, the model for garden. The design will include landscaped terraces, formal water elements, topiary and elegant stonework reflecting the early renaissance ideals of symmetry and proportion. This partnership between the Foundation and the Staten Island Botanical Garden will help facilitate Staten Island's continued emergence as a cultural destination in the metropolitan area.





{ RCSF in the Community



The Staten Island Film Festival presented by Richmond County Savings Foundation brought Staten Island its first borough wide Film Festival. The inaugural Festival in 2006 attracted more than 4,500 persons and the 2007 Festival welcomed 7,000 visitors. Over 100 films a year were screened at 10 venues across Staten Island. The Festival serves as a vehicle to both promote arts as well as to encourage visitors from the greater metropolitan area to visit Staten Island. The Foundation's presentation of the Festival over its first three years helped ensure the establishment of the Staten Island Film Festival as a true participant on the independent film festival circuit.



what's next ? }



10 Years...One Mission

As we contemplate our next Ten Years and beyond, we remain confident of the following ~

1. The Foundation will continue to evolve in response to our community's needs and priorities
2. The Foundation will continue to build new partnerships for our community's benefit
3. The Foundation will continue to support organizations whose work assists us in the advancement of our mission
4. The Foundation will continue to require accountability of its partner organizations
5. The Foundation will continue to use its resources to develop our community's potential
6. The Foundation will continue to respect the responsibility entrusted to it by the community as steward of the Foundation's endowment
7. The Foundation will continue to seek out new and innovative initiatives that add dimension to our community
8. The Foundation will continue its focus on effective and results oriented philanthropy
9. The Foundation will continue to acknowledge that our strength and our future depends on our continued collaborations
10. The Foundation will continue to adhere to its mission of improving the quality of life in the communities served by the Richmond County Savings Foundation.





900 South Avenue • Executive Suite 17
Staten Island, New York 10314
www.RCSF.org • 718.568.3516/3517